

REAL ESTATE

Trailer Lot

96x110, city water & sewer with 9' driveway in Washburn, Mo. 65772
\$5,900
(417)385-7935

3 Bd. 2 Ba.

FP, 2 car garage, metal corral, storm shelter, 10 acres. **\$109,000**
(417)342-3152

HOME FOR SALE IN AURORA

For sale by owner with no money down. Financing available. 2 bd., 1 bath. Central heat/air and new flooring. Lots of storage, very nice neighborhood. Detached shop and connected deck.
(417)846-0324
 Mon.-Fri. 8am-5pm

BLUE HERON ESTATE SALES

"We liquidate estates"
 bwardlaw@leru.net
417-435-2243
 Get details at our website
 blueheronspringsfarm.com

PUBLISHER'S NOTICE: All real estate advertised herein is subject to the Federal Fair Housing Act, which makes it illegal to advertise any preference, limitation, or discrimination because of race, color, religion, sex, handicap, familial status, or national origin, or intention to make any such preference, limitation, or discrimination. We will not knowingly accept any advertising for real estate which is in violation of the law. All persons are hereby informed that all dwellings advertised are available on an equal opportunity basis.

HELP WANTED

EXPERIENCED CNA

Apply in person at or send resume to:
TrueCare
Assisted Living
 25832 State Hwy. YY
 Shell Knob, MO 65747
 Drug free/smoke free workplace

BARRY COUNTY Health Department is currently seeking someone to do weekend cleaning for both the Cassville and Monett offices. Please contact Roger Brock at 417-847-2114.

DRIVERS, SOLO, 3 or 6 day runs, 44 cents per mi., free health ins., same day pay. 800-769-3993 for details. Online app. www.trailiner.com.

HELP WANTED immediate opening. Must be an experienced "CLASS A" CDL licensed driver. Benefits include 100% paid health insurance. Driving 4 days a week. Home weekends. Apply in person at Ball & Prier Tire, Inc. Located at Hwy. 86 & J, Golden, MO. 417-271-3299.

TEAM DRIVERS, 130,000 per year, 2014 & 2015 trk, home weekly, same day pay, free health ins. 5000.00 sign on bonus pays out in 4 months, leases and lease purchases available. Details call 800-769-3993. Online app. www.trailiner.com.

MAIL DELIVERY PERSON NEEDED

\$85 a day, 4-6 days a week. Must have clean driving record. Change flats. Start immediately.
(417)336-8167
 rondean15@yahoo.com

DRIVERS - OTR

No-touch freight! Paid vacation. Great benefits, bonuses. 401k. Prepass. CDL-A, 2 yrs. exp. req.
 www.Climateexpress.com
636-584-6073

MUST HAVE CLASS A CDL

Arkansas based company looking for individual or couple to train to perform hearing test. Extensive travel, starting salary \$27,000.00 yr. plus \$70.00 a day per diem.
 Call M-F 9am-4pm
(479)359-2111

CASSVILLE HEALTHCARE & REHAB

A Skilled Nursing Facility is now accepting applications for **CNAs**
 Full & part time
 Evening & night shifts
LPNs
 Full & part time
 All shifts
DISHWASHER

NEW PAY SCALE! BENEFITS & VACATION!

 Apply in person
1300 County Farm Rd.
Cassville, MO 65625
 Cassville Healthcare & Rehab is an equal opportunity employer.

DRIVERS: out and back, No-touch Openings. Avg 2500+mi/Week. Excellent Pay, Benefits! 2yrs CDL-A Exp. Call Penske Logistics: 1-888-803-6618

DRIVERS: JOIN our growing fleet! Standard Transportation Services gets you HOME WEEKLY! Truck w/microwave & fridge, PAID health ins., Vacation, Holidays & more! CDL-A w/2 yrs. experience. 1-888-992-4038 ext. 105.

DRIVERS, \$60,000+, CDL-A, \$2500 sign on, 1 month exp., same day pay! Free health ins. No CDL? We have free training! www.trailiner.com, 800-769-3993.

CASSVILLE HEALTHCARE & REHAB

A Skilled Nursing Facility is now accepting applications for **CNAs**
 Full & part time
 Evening & night shifts
Housekeeper/Laundry
 Nights & Weekends

NEW PAY SCALE! BENEFITS & VACATION!

 Apply in person
1300 County Farm Rd.
Cassville, MO 65625
 Cassville Healthcare & Rehab is an equal opportunity employer.

CDL DRIVER NEEDED

Pallet Lumber, LLC is looking to hire two drivers. Must have a valid Class A Commercial Driver's License and clean driving record. The hours and days will vary, but will fall on Monday-Friday and you will be home most nights. Dry van, flatbed, and log trailer experience preferred. If you are interested or would like further information, please contact Pallet Lumber, LLC, at 417-835-3644 or stop by our office at 9193 State Hwy. 76, Exeter, Mo.

RED ROSE HEALTH & REHAB

CASSVILLE, MO
417-847-2184
 We need 2 great **CNAs** and a dedicated part-time **LPN** for our night shift. Good wages, great staff.



417-847-5919

is now accepting applications for **Truck Drivers**

RL Transport has openings for truck drivers. Starting pay is .33/all miles. Home on weekends. No-touch freight/some drop and hook/regional routes. We offer a competitive benefit package with includes: health, dental, vision, HSA, life, AD&D, and 401k plan (at 90 days).

Essential Job Functions:

- Freight hauling
- Drive and operate trucks while complying with all DOT requirements
- Assures all equipment is routinely maintained

Required Skills:

- 1 year driving a semi preferred
- Current Class A CDL and current medical card
- Must have a clean driving record

Interested applicants please call Dan Beagle at

417-847-5919



417-847-5919

is now accepting applications for **Logistics Coordinator**

RL Transport has an opening for a Logistics Coordinator. This position will be responsible for growing our freight brokerage department, coordinating our trucks and loads regionally and manage our ongoing preventative maintenance program on equipment. Salary is commensurate with experience. We offer a competitive benefit package which includes: health, dental, vision, HSA, life, AD&D, and 401k plan (after 90 days).

Essential Job Functions:

- Coordinate trucks and loads in our region
- Provide customer service
- Develop additional freight lanes
- Manage and build new relationships

Job Requirements:

- High school diploma
- 2 years experience required
- Must have excellent customer service, communication and follow up skills

Interested applicants please send resume to

dbeagle@marck.net

Cedar Ridge Care Center

is looking for a **Part-time Cook**
 Week & Weekends
417-847-5546

FREE

TO GIVE AWAY
 Assorted stuffed animals
 Call 417-342-8526

THE CLASSIFIEDS
 small ads **BIG** deals

Down To Earth Treasures

GRAND OPENING!
 This Saturday, June 28
 Free Drinks!!

- All Ages Clothing
- Household Items
- Collectibles
- Furniture
- Much, much more!

111 4TH ST., MONETT • OPEN 10-6 DAILY, CLOSED FRIDAY

The Barry County Advertiser will be closed Friday, July 4th!



Don't Pay Full Price When You Go to Branson!

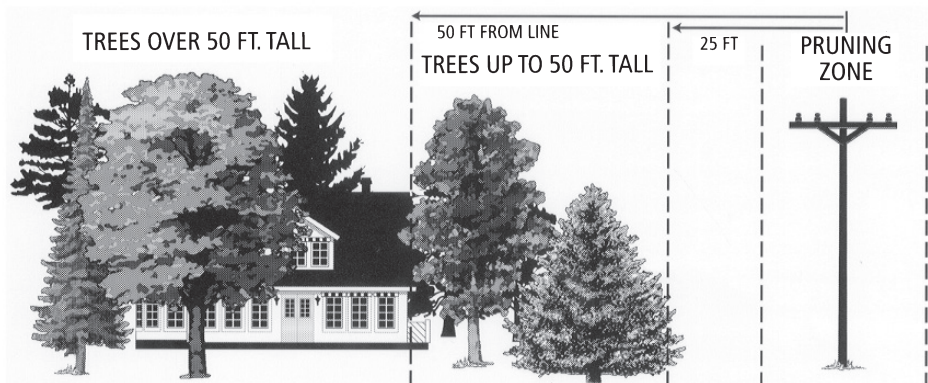
Check out our discounts before you go!

www.radiotalon.com

126 S. JEFFERSON AVENUE IN AURORA
 678-0940, 235-6041, 800-928-5253

KRMO AM 990 • KKBL 95.9 FM • KSWM AM 940 • KQMO 97.7 FM

Tree's a crowd.



MAPLES, OAKS, SPRUCE, HICKORY, PINE, WHITE ASH, BLACK WALNUT

PEAR, REDCEDAR, JACK PINE, BIRCH, GREEN ASH, MULBERRY, GOLDEN RAIN TREE, REDBUD, DOGWOOD, SUMAC, HAWTHORN, WILD PLUM, CRABAPPLE, JAPANESE YEW

Trees growing too close to power lines are potential hazards and can cause power outages. Careful planning and selection of trees before planting provides a well-balanced landscape and reduces the need for right-of-way maintenance.

Give your electric cooperative a call with any questions you may have about which trees are right for your yard.

Barry Technology Services, LLC



Barry Electric Cooperative

4015 Main St. • Cassville, MO 65625-1624 • (417) 847-2131 • barryelectric.com

We bring the **Advertiser** to your door



through the **US Postal Service!**
 All in Barry County **13,000** are delivered each week!

"Where It Pays To Advertise"



"The Paper With 100% Coverage"

904 West Street
 Cassville, MO 65625
(417) 847-4475
FAX (417) 847-4523



1.9% APR
 Available on All
 Certified for 60
 Month WAC

PROGRAM CARS & TRUCKS PRE-OWNED CARS & TRUCKS

2011 FORD FUSION SE
 Certified

\$15,858
 #319225

2011 FORD TAURUS LTD
 Certified

\$18,825
 •Leather #151351

2005 MERCURY MONTEGO
 Luxury

\$6,615
 •Local Trade #620310

2006 FORD MUSTANG
 Coupe

\$10,299
 •V-6 #165773

2012 FORD FIESTA SE
 Certified

\$13,998
 •Fuel Saver #218900

2012 FORD MUSTANG COUPE
 Certified

\$18,959
 #208454

2007 FORD FOCUS SE
 Fuel Saver

\$7,466
 •ZX4 #127998

2008 DODGE AVENGER SE
 Local Trade

\$9,922
 #670176

2013 FORD FUSION SE
 Certified

\$18,999
 #222585

2014 FORD MUSTANG CONV.
 Certified

\$24,772
 •Summer Fun! #211054

2010 FORD FUSION SE
 One Owner

\$12,309
 #232237

2011 BUICK REGAL CXL
 Loaded

\$15,740
 •Leather #179274

2013 FORD EDGE LIMITED
 Certified

\$27,205
 •AWD •Loaded #B65606

2013 FORD ESCAPE SEL
 Certified

\$21,899
 •FWD •Leather #A81567

2013 HYUNDAI SONATA GLS
 One Owner

\$15,994
 #722066

1999 CHEV SILVERADO LS
 Z71

\$9,243
 •4X4 #259278

2013 FORD EXPLORER LTD
 Certified

\$30,347
 •Leather •Loaded #A34471

2014 FORD EXPLORER LTD
 4X4

\$35,668
 •Leather •Loaded #A14157

2002 FORD EXPLORER
 Local Trade

\$6,437
 #A81531

2002 FORD F-150 XLT
 Reg Cab

\$7,983
 •4X2 #B44544

2014 FORD ESCAPE SE
 Low Miles

\$21,991
 •FWD #A15101

2014 FORD FLEX LTD
 Loaded

\$29,993
 •NAV •Push Button Start #D04231

2005 NISSAN FRONTIER SE
 Crew Cab

\$13,953
 •4X4 #426567

2006 NISSAN MURANO S
 Local Trade

\$11,712
 •AWD #515501

PRE-OWNED CAR DEAL OF WEEK

2003 FORD F-150 XLT
 Super Cab

\$7,983
 •4X4 •Local Trade #A04913

2010 CHEV SILVERADO 1500 LT
 Crew Cab

\$21,130
 •Local Trade #244590

2012 GMC TERRAIN SLE
 One Owner

\$19,517
 #226695

Pictures for illustration purposes only

JIMMY MICHEL MOTORS

ONLY ONE LOCATION WITH HUNDREDS OF VEHICLES TO CHOOSE FROM, IN BEAUTIFUL DOWNTOWN AURORA, MO!

TOLL FREE 800-838-4830

WWW.JIMMYMICHEL.COM